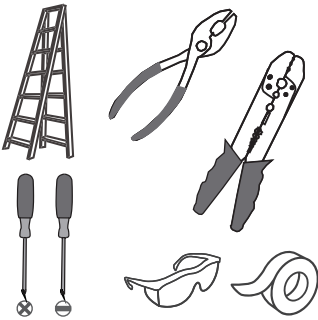


Tools Required



Light Source



LED G9 4.5W Bulb

3 BULBS REQUIRED INCLUDED

Warnings and Cautions

Turn off the electricity at the circuit breaker before installation. Consult a licensed electrician if in doubt about installation.

Turn off power to the fixture and allow the bulbs to cool before replacing.

Package Contents

Preparation: Identify and inspect all parts before beginning the installation.

Missing or damaged parts? Contact your original place of purchase.

PARTS BAG

A Mounting Screw x 2

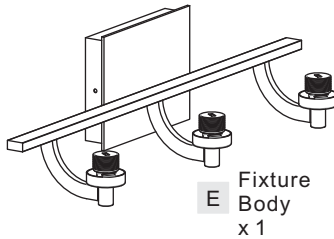


B Inner Backplate x 1

C Outlet Box Screw x 2



D Wire Connector x 3



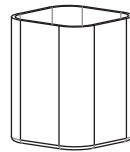
E Fixture Body x 1



F LED G9 Bulb x 3



G Socket Collar x 3



H Glass Shade x 3



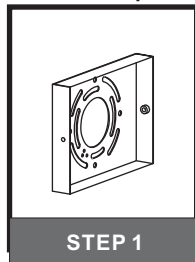
I Steel Collar x 3

Socket Collar Tool x 1



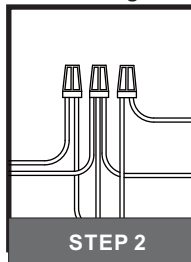
Table of Contents

Inner Backplate



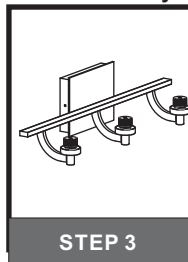
STEP 1

Wiring



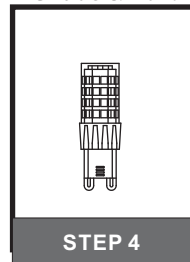
STEP 2

Fixture Body



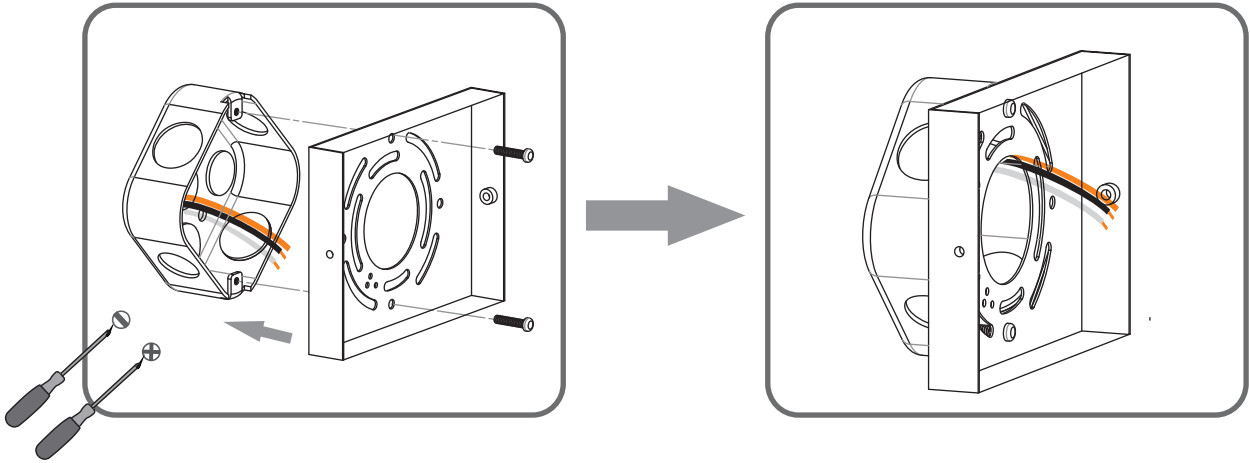
STEP 3

Shade & Bulb

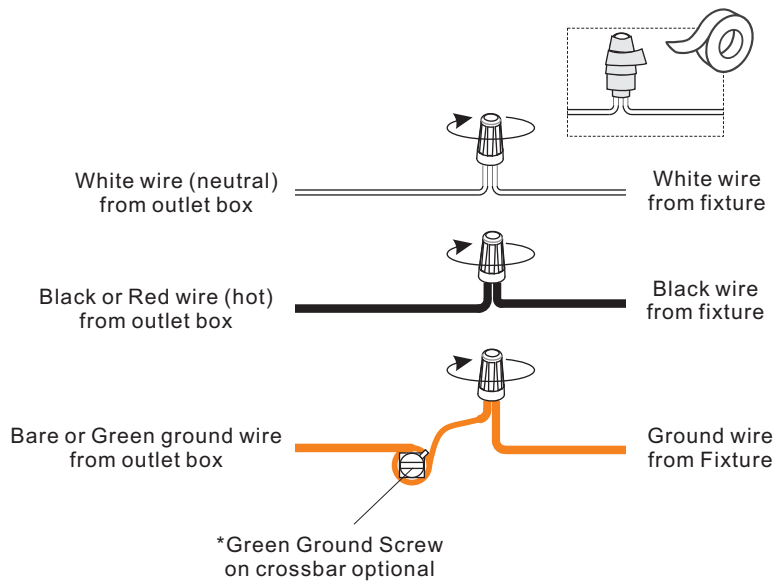


STEP 4

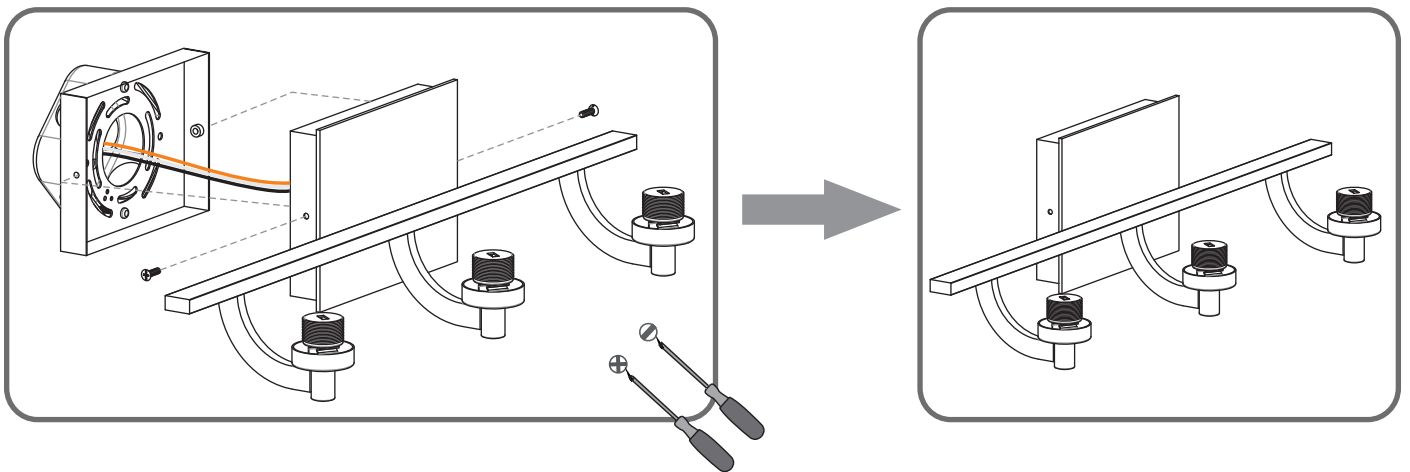
STEP 1



STEP 2



STEP 3



STEP 4

